

June 28, 2022
Meeting Packet

Meeting Agenda

Community Benefits Annual Meeting
Beth Israel Deaconess Medical Center (BIDMC)
Tuesday, June 28, 2022
5:00pm - 6:00 pm
[Zoom Registration Link](#)

I. 10 minutes	Welcome and Introductions
II. 20 Minutes	FY22 Community Health Needs Assessment and Implementation Strategy
III. 10 minutes	Moderated Q & A
IV. 15 minutes	The Center for Violence Prevention and Recovery Presentation
V. 5 minutes	Next Steps and Adjourn

Next Meeting: September 8, 2022 (Thursday)

Meeting Slides

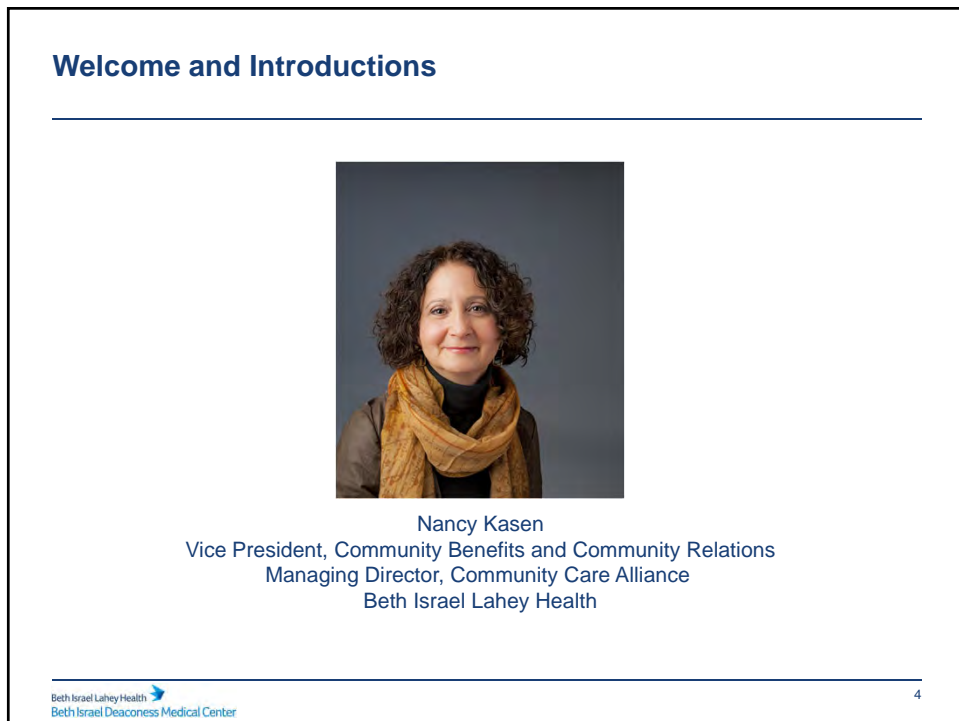
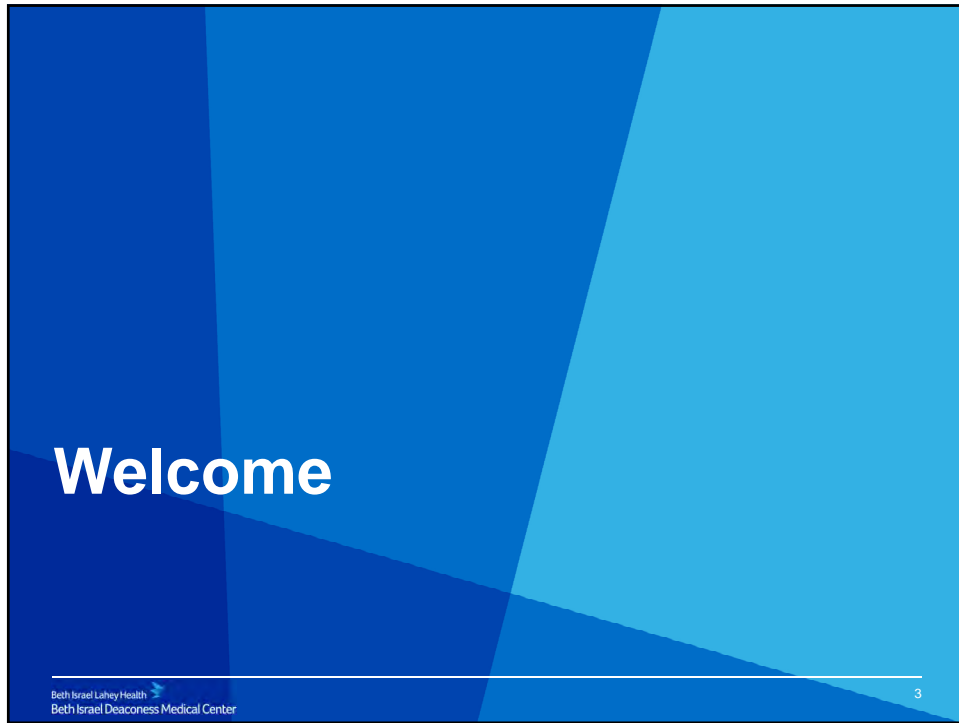
BIDMC Community Benefits Annual Public Meeting

June 28, 2022

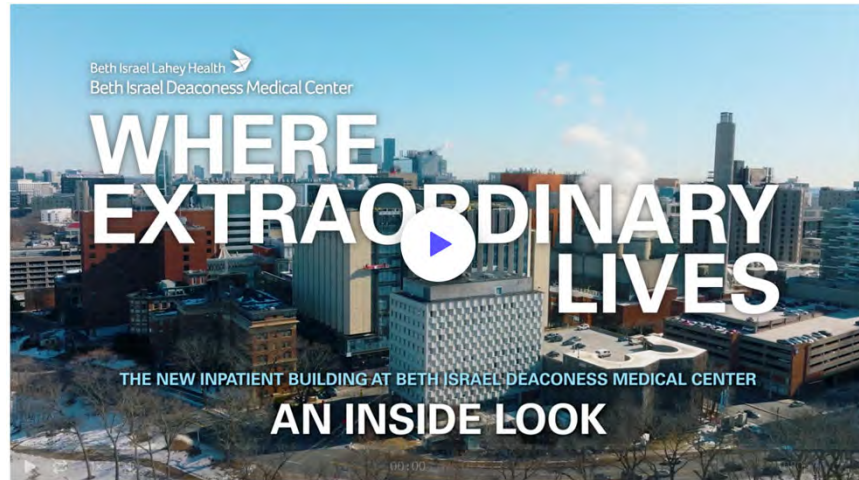
Beth Israel Lahey Health 
Beth Israel Deaconess Medical Center

Content

- Welcome and Introductions
- FY22 Community Health Needs Assessment and Implementation Strategy
 - Moderated Q & A
- BIDMC Center for Violence Prevention and Recovery Presentation
- Next Steps and Adjourn



BIDMC New Inpatient Building



[Play video](#)

FY22 Community Health Needs Assessment and Implementation Strategy

FY22 CHNA and FY23-25 IS Guiding Principles



Equity: Work toward the systemic, fair and just treatment of all people; engage cohorts most impacted by COVID-19



Collaboration: Leverage resources to achieve greater impact by working with community residents and organizations



Engagement: Intentionally outreach to and interact with hardly reached populations; including but not limited to people impacted by trauma, people with disabilities, communities most impacted by inequities, and others

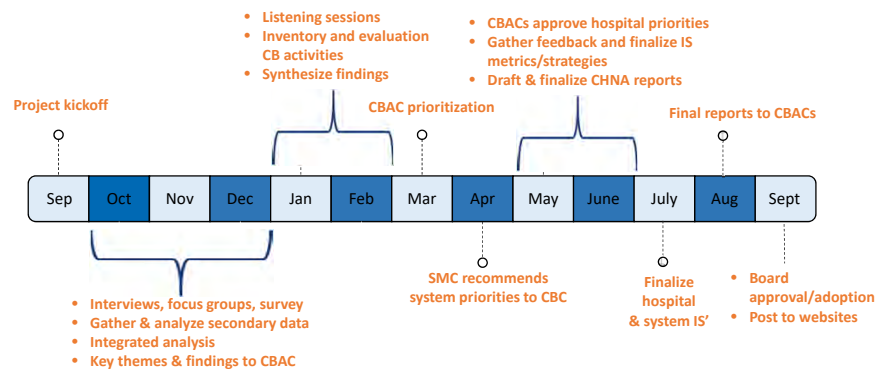


Capacity Building: Build community cohesion and capacity by co-leading Community Listening sessions and training community residents on facilitation



Intentionality: Be deliberate in our engagement and our request and use of data and information; be purposeful and work collaboratively to identify and leverage resources for maximum benefit

FY22 CHNA and FY23-25 IS CHNA Process Sep 2021- Sept 2022



FY22 CHNA


Activities

Collection of quantitative data:

- US Census Bureau
- Center for Health Information and Analysis
- Behavioral Risk Factor Surveillance Survey
- Youth Risk Behavior Survey
- MDPH COVID-19 Community Impact Survey
- And more!


Additional activities:

- Collaboration and info sharing with Boston CHNA-CHIP Collaborative and iCHNA
- Creation of resource inventory
- Evaluation of FY20-22 Community Benefits activities
- Meetings and prioritization with community stakeholders and Community Benefits Advisory Committee




85

Key informant interviews



22

Focus groups



122

Listening session participants

Beth Israel Lahey Health
Beth Israel Deaconess Medical Center

9

FY22 CHNA

Key Themes Presented to CBAC for Prioritization

Key Themes from quantitative data, interviews, focus groups, survey, and listening sessions shared with hospital leadership and CBAC to prioritize

Social Determinants of Health

- Housing
- Economic insecurity
- Food insecurity
- Workforce development
- Community safety
- Access to internet/tech resources
- Language accessibility
- Access to education
- Transportation
- Environmental justice/climate
- Small businesses

Access to Care

- Cost and insurance barriers
- Linguistic access
- Diversify healthcare workforce
- Navigation of healthcare system
- Digital divide/access to tech resources
- Addressing mistrust in healthcare
- Build capacity of healthcare workforce
- More peer led services
- Promotion/awareness of SDOH resources

Diversity, Equity, Inclusion

- Racism (individual and systemic)
- Linguistic barriers
- Culturally appropriate services
- Diversify leadership
- Lack of education re: DEI
- Cross sector collaboration and responses
- Homophobia and transphobia

Mental Health

- Youth mental health
- Impact of trauma
- Education for community & providers
- Isolation
- Stress
- Depression
- Stigma
- Anxiety

Beth Israel Lahey Health
Beth Israel Deaconess Medical Center

10

FY23-25 Implementation Strategy

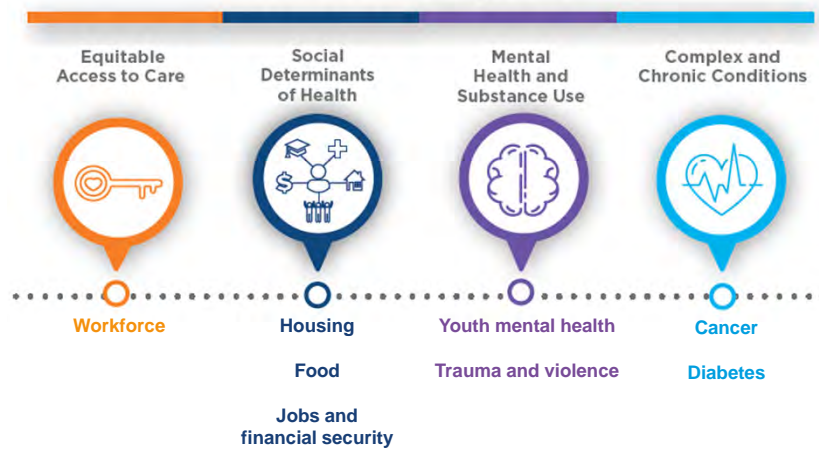
Strategy Considerations

- Address the prioritized community health needs and/or populations in the hospital's community benefits service area
- Provide approaches across the up-, mid-, and downstream spectrum
- Are sustainable through hospital or other funding
- Are evidence-based or evidence-informed
- Leverage or enhance community partnerships
- Have potential for impact
- Contribute to the systemic, fair and just treatment of all people

FY22 CHNA and FY23-25 IS

BIDMC Final Priorities

HEALTH EQUITY



FY22 CHNA and FY23-25 IS BIDMC Priority Populations



**Low-resourced
populations**



**Racially, ethnically, and
linguistically diverse
populations**



Youth



LGBTQIA+



Older adults



**Families affected by
violence and/or
incarceration**

FY23-25 IS Priorities and Goals

Equitable Access to Care

- **Goal:** Improve access to equitable, comprehensive, high quality health care services, including primary care, OB/GYN, and specialty care, as well as urgent, emergent, and trauma care for those who face cultural and linguistic barriers

Social Determinants of Health

- **Goal:** Promote healthy neighborhoods by enhancing the built, social, and economic environment where people live, work, play, and learn in order to improve health and quality-of-life outcomes

FY23-25 IS

Priorities and Goals

Mental Health and Substance Use

- **Goal:** Promote social and emotional wellness by fostering resilient communities and building equitable, accessible, and supportive systems of care to address mental health and substance use issues and conditions

Complex and Chronic Conditions

- **Goal:** Improve health outcomes and reduce disparities for individuals at-risk for or living with chronic and/or complex conditions and caregivers by enhancing access to screening, referral services, coordinated health and support services, medications, and other resources

**Center for Violence
Prevention and
Recovery (CVPR)**

Lisa Lachance, LICSW, Director
Cynthia Kennedy, LICSW, Project Lead for Adelante and The Sanctuary Project

The Center for Violence Prevention and Recovery



Partnerships

Louis D. Brown Peace Institute
 Casa Myrna Medical Legal Partnership
 Brigham and Women's Hospital's Violence Intervention Program



Kick off for Adelante Project 2019



Louis D. Brown Peace Institute

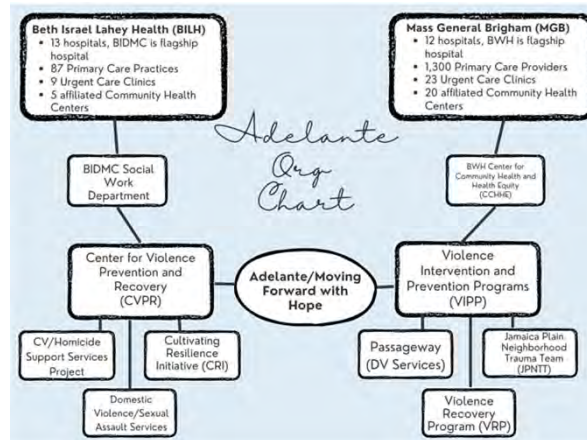


Tina Chéry

“We come into this partnership with equity and respect for each other and, most importantly, for survivors. The Louis D. Brown Peace Institute is an organization led by a Black Latina, and for Beth Israel Lahey Health to engage with us in this way has been phenomenal and powerful. When we first came together, we did not know each other. And without shaming or blaming about the problems we were facing, we got right down to work. Together, we have opened a portal that cuts right through the hierarchy.”

– Clementina (Tina) Chéry, Founder & CEO
Louis D. Brown Peace Institute

Adelante



Next Steps


Beth Israel Lahey Health
Beth Israel Deaconess Medical Center

21

Next Steps

CHNA/IS Report: Will be published on the [BIDMC Community Benefits website](#) by September 30th

Thank you!



2022 Community Health Needs Assessment

Beth Israel Lahey Health
Beth Israel Deaconess Medical Center

22

Advisory Committee Members	2019						2020				
	April 9th	May 21st	June 25th	July 23rd	September 24th	October 22nd	January 28	April 28	June 23	September 22	December 15
Elizabeth Browne	X	X	Ph	Ph	X	X	X	Ph	Ph	Ph	A
Tina Chery	X	A	A	A	Ph	A	A	Ph	A	A	A
Shondell Davis											
Richard Giordano	X	X	X	X	X	X	X	Ph	Ph	Ph	Ph
Sarah Hamilton	X	X	X	X	X	X	X	A	Ph		
Barry Keppard	X	X	A	X	X	X	X	Ph	Ph	Ph	Ph
Phillomin Laptiste	X	X	X	A	X	X	X	Ph	Ph	A	Ph
Theresa Lee	X	A	X	A	X	A	X				
Angie Liou								Ph	Ph	Ph	Ph
James Morton								A	Ph	Ph	A
Sandy Novack								Ph	Ph	Ph	Ph
Holly Oh	X	X	A	X	X	X	X	Ph	A	Ph	Ph
Alex Oliver-Davila	Ph	X	A	A	A	X	A	A	Ph	Ph	Ph
Luis Prado	A	X	A	X	A	X	X	Ph	Ph	A	Ph
Triniese Polk							X	A	Ph	Ph	Ph
Jane Powers	A	X	X	X	X	X	X	Ph	Ph	Ph	Ph
Richard Rouse	X	X	X	X	X	X	X	A	A	Ph	Ph
Jerry Rubin	X	A	A	X	X	X	X	Ph	A	Ph	A
Fred Wang	X	X	X	X	X	X	X	Ph	Ph	Ph	Ph
BIDMC Staff - Ex Officio											
Walter Armstrong							X	Ph	Ph	Ph	Ph
Lauren Gabovitch	X	A	A	X	X	X	A	Ph	Ph	A	Ph
Nancy Kasen	X	X	X	X	X	X	X	Ph	Ph	Ph	Ph
Joanne Pokaski	X	A	A	X	X	X	A	Ph	Ph	Ph	Ph
Robert Torres							X	Ph	Ph	Ph	Ph
LaShonda Walker-Robinson	X	X	Ph	X	X	X	X	Ph	Ph	A	Ph

Key	
X	Participated in person
A	Absent
Ph	Participated by Phone or Video

Advisory Committee Members	2021				2022				
	March 23	June 22	September 28	December 14	March 23	May 24	June 28	September 8	December 6
Alberte Altine-Gibson			Ph	Ph					
Flor Amaya	Ph	Ph	Ph	A	Ph	Ph	Ph		
Maia Betts			Ph	Ph	A	A	A		
Elizabeth Browne	Ph	Ph	Ph	Ph	Ph	Ph	Ph		
Tina Chery	A	Ph							
Alexandra Chery Dorrelus		Ph	Ph	Ph	Ph	A	A		
Shondell Davis	Ph	Ph	Ph	Ph	Ph	Ph	Ph		
Richard Giordano	Ph	Ph	Ph	Ph	Ph	Ph	Ph		
Barry Keppard	Ph	Ph	Ph	Ph	Ph	Ph	Ph		
Kira Khazatsky			Ph	Ph	Ph	A	A		
Phillomin Laptiste	Ph	Ph							
Angie Liou	Ph	Ph	Ph	Ph	Ph	A	Ph		
James Morton	Ph	A	Ph	A	A	A	A		
Sandy Novack	Ph	Ph	Ph	Ph	Ph	Ph	Ph		
Holly Oh	Ph	Ph							
Alex Oliver-Davila	Ph	A	A	Ph	A	A	Ph		
Triniese Polk	Ph	A	A	Ph	A	Ph	A		
Jane Powers	Ph	Ph	A	A	Ph	Ph	Ph		
Richard Rouse	Ph	A	Ph	A	Ph	A	A		
Samantha Taylor							Ph		
Fred Wang	Ph	Ph	Ph	Ph	Ph	Ph	Ph		
BIDMC Staff - Ex Officio									
Walter Armstrong	Ph	Ph	Ph	Ph					
Lauren Gabovitch	A	Ph	Ph	Ph	Ph	A	Ph		
Nancy Kasen	Ph	Ph	Ph	Ph	Ph	A	Ph		
Marsha Maurer					Ph	Ph	Ph		
Kelina (Kelly) Orlando				Ph	Ph	Ph	Ph		
Joanne Pokaski	Ph	A	Ph	Ph	Ph	A	A		
Melody Route-Satchell		Ph	A						
Robert Torres	Ph	Ph	Ph	Ph	Ph	Ph	Ph		
LaShonda Walker-Robinson	Ph	Ph	Ph	Ph	Ph	Ph	Ph		

Key	
X	Participated in person
A	Absent
Ph	Participated by Phone or Video