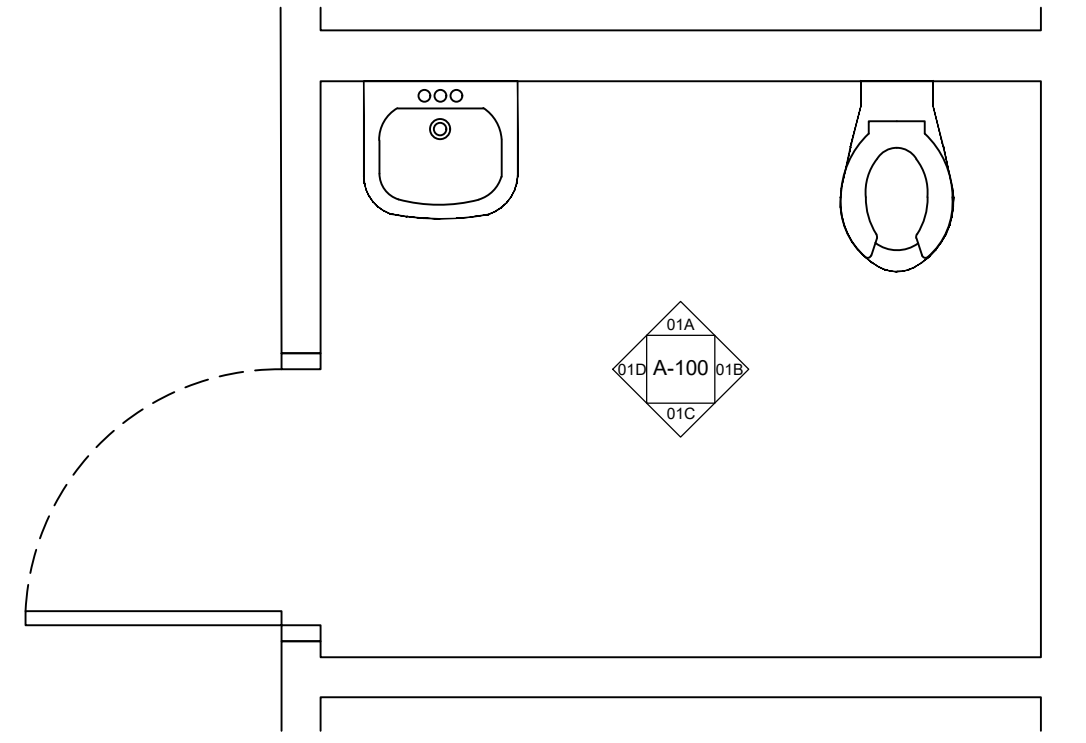
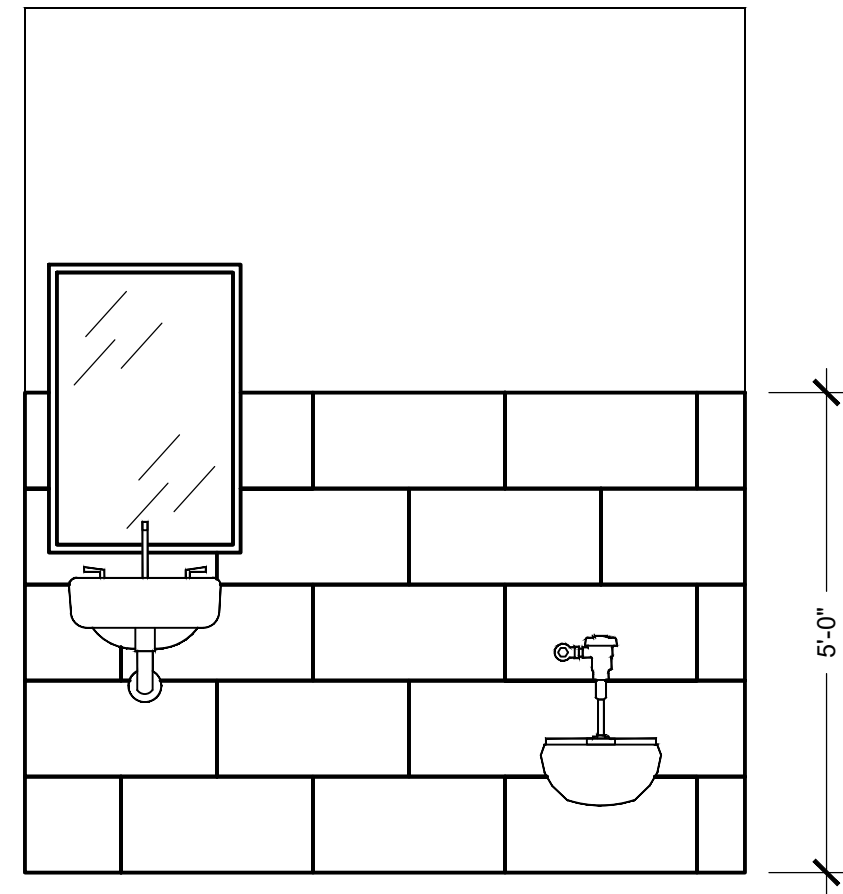


**BIDMC FINISH  
STANDARDS**

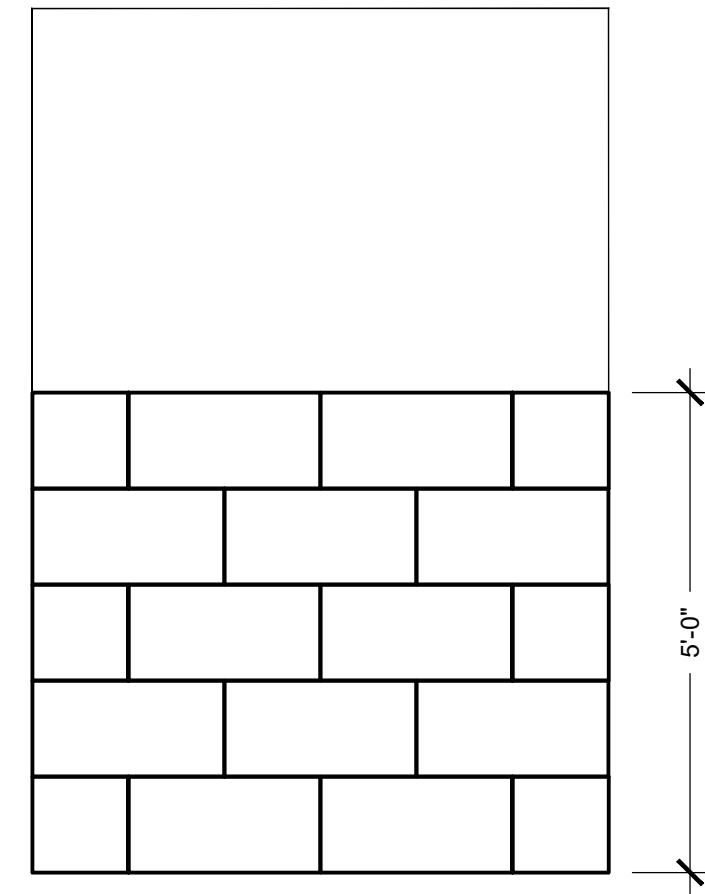
DRAWING TYPE:  
**TOILET ROOM  
FINISH STANDARD**



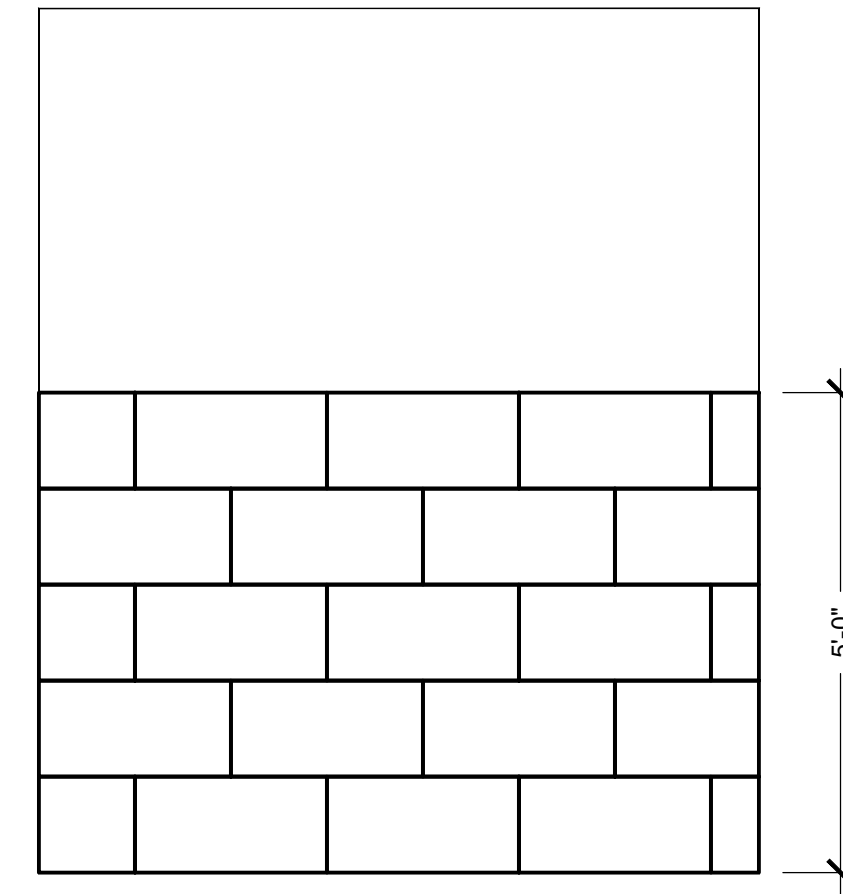
**01** PATIENT & PUBLIC TOILET  
SCALE: 1/2" = 1' - 0"



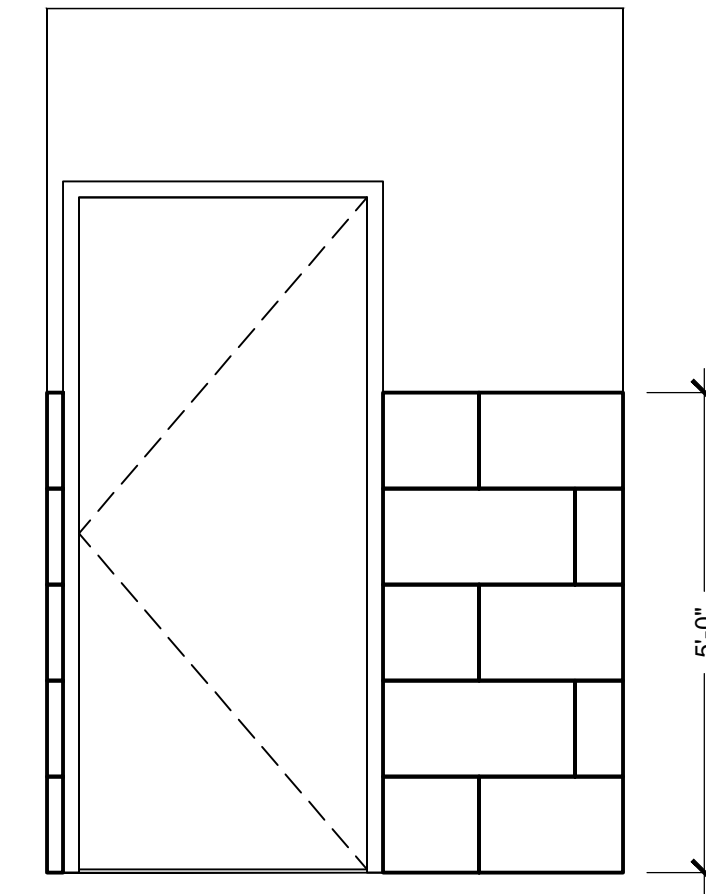
**01A** PATIENT & PUBLIC TOILET  
SCALE: 1/2" = 1' - 0"



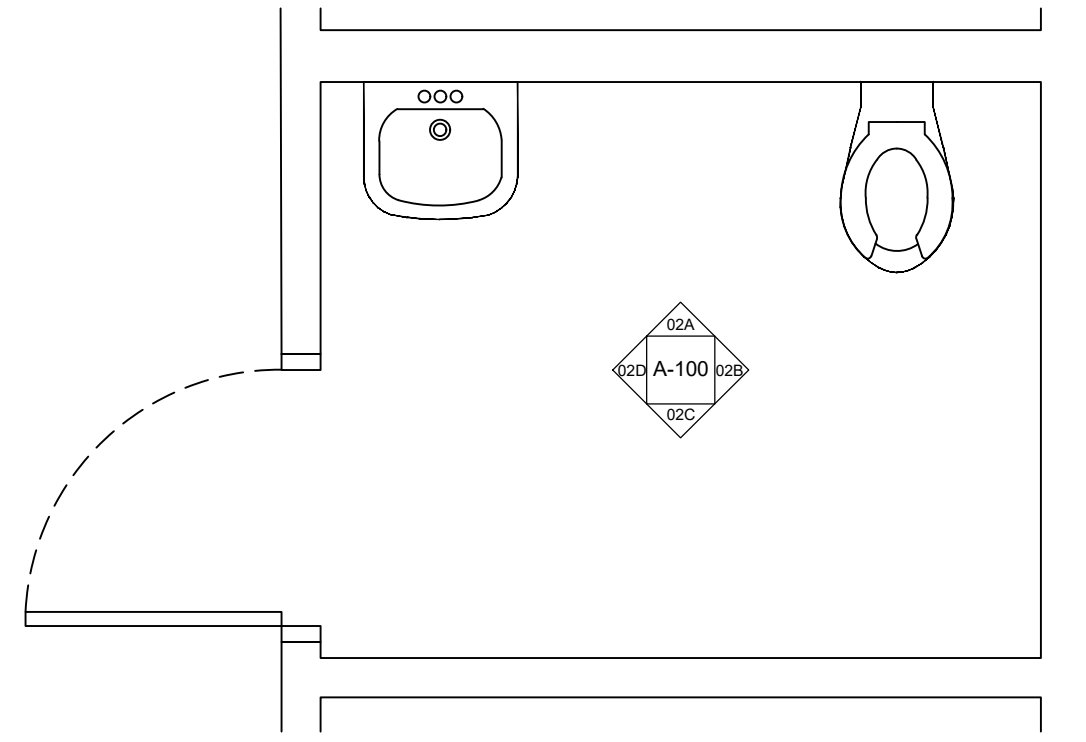
**01B** PATIENT & PUBLIC TOILET  
SCALE: 1/2" = 1' - 0"



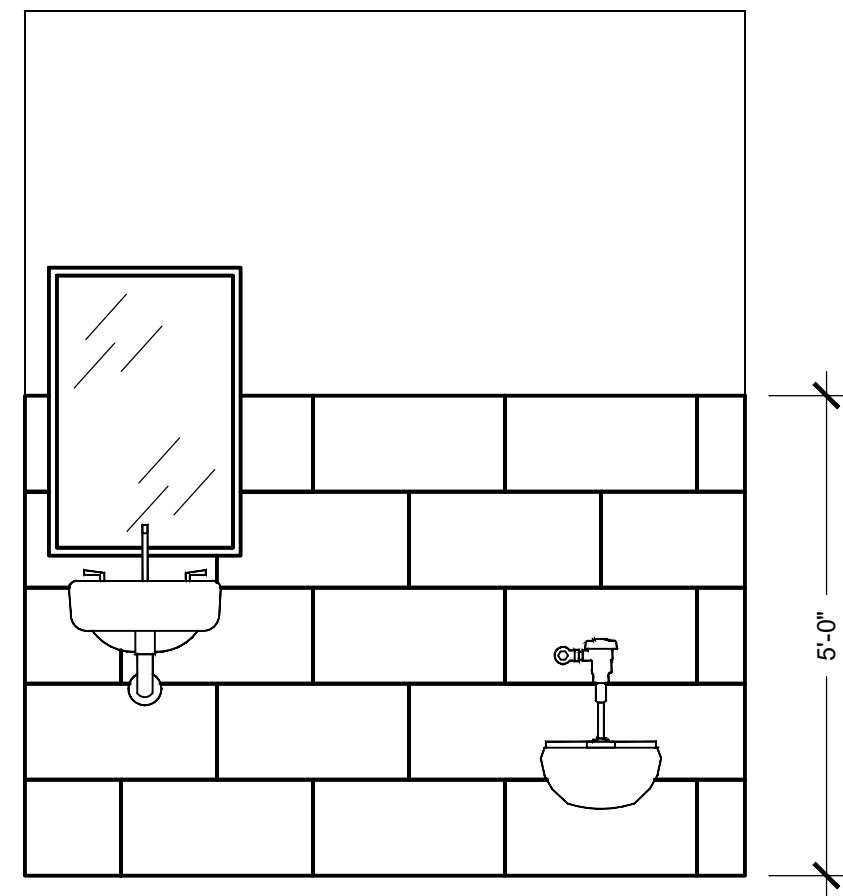
**01C** PATIENT & PUBLIC TOILET  
SCALE: 1/2" = 1' - 0"



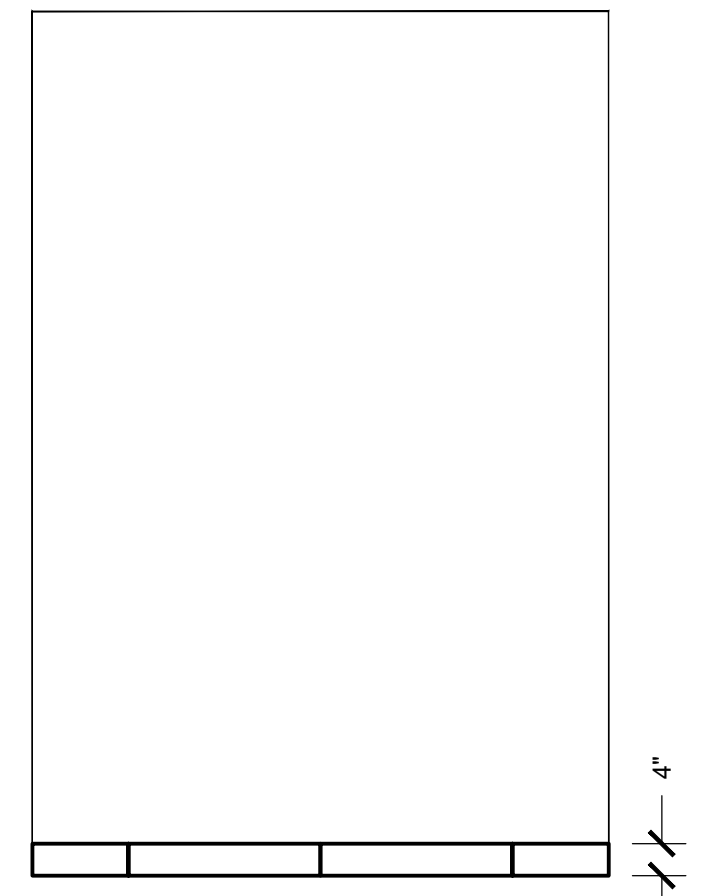
**01D** PATIENT & PUBLIC TOILET  
SCALE: 1/2" = 1' - 0"



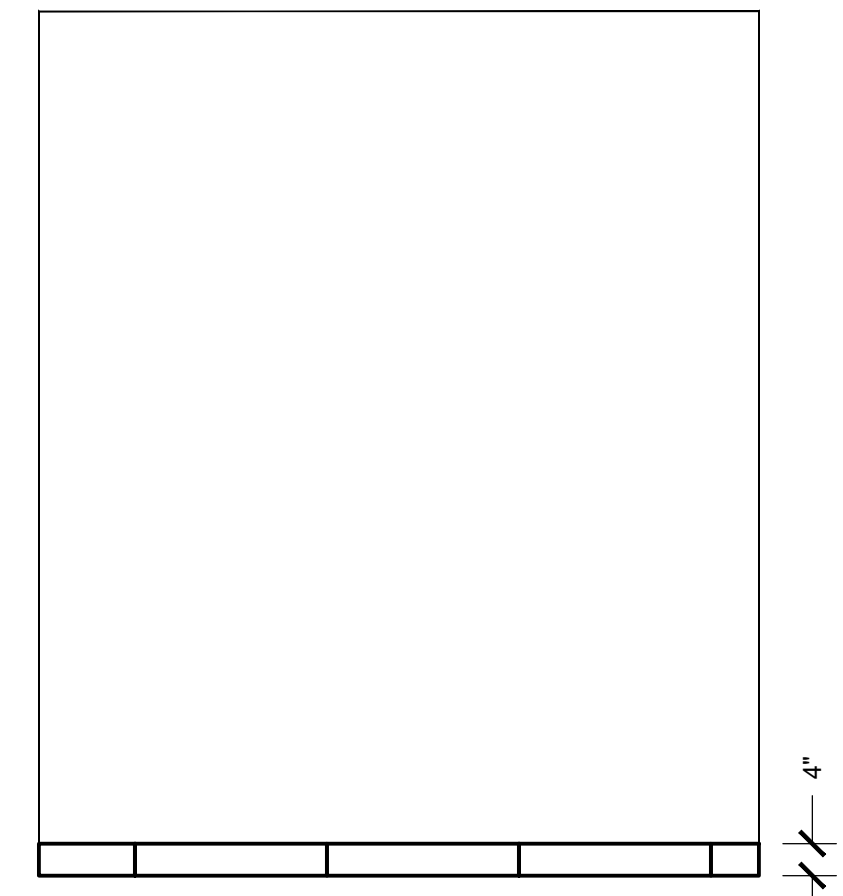
**02** STAFF TOILET  
SCALE: 1/2" = 1' - 0"



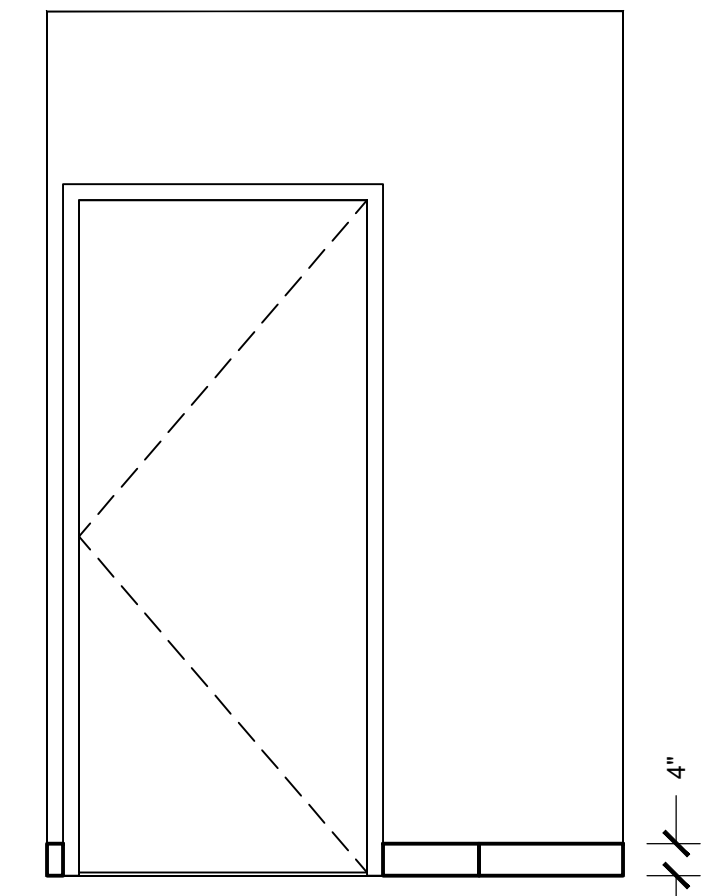
**02A** STAFF TOILET  
SCALE: 1/2" = 1' - 0"



**02B** STAFF TOILET  
SCALE: 1/2" = 1' - 0"



**02C** STAFF TOILET  
SCALE: 1/2" = 1' - 0"



**02D** STAFF TOILET  
SCALE: 1/2" = 1' - 0"